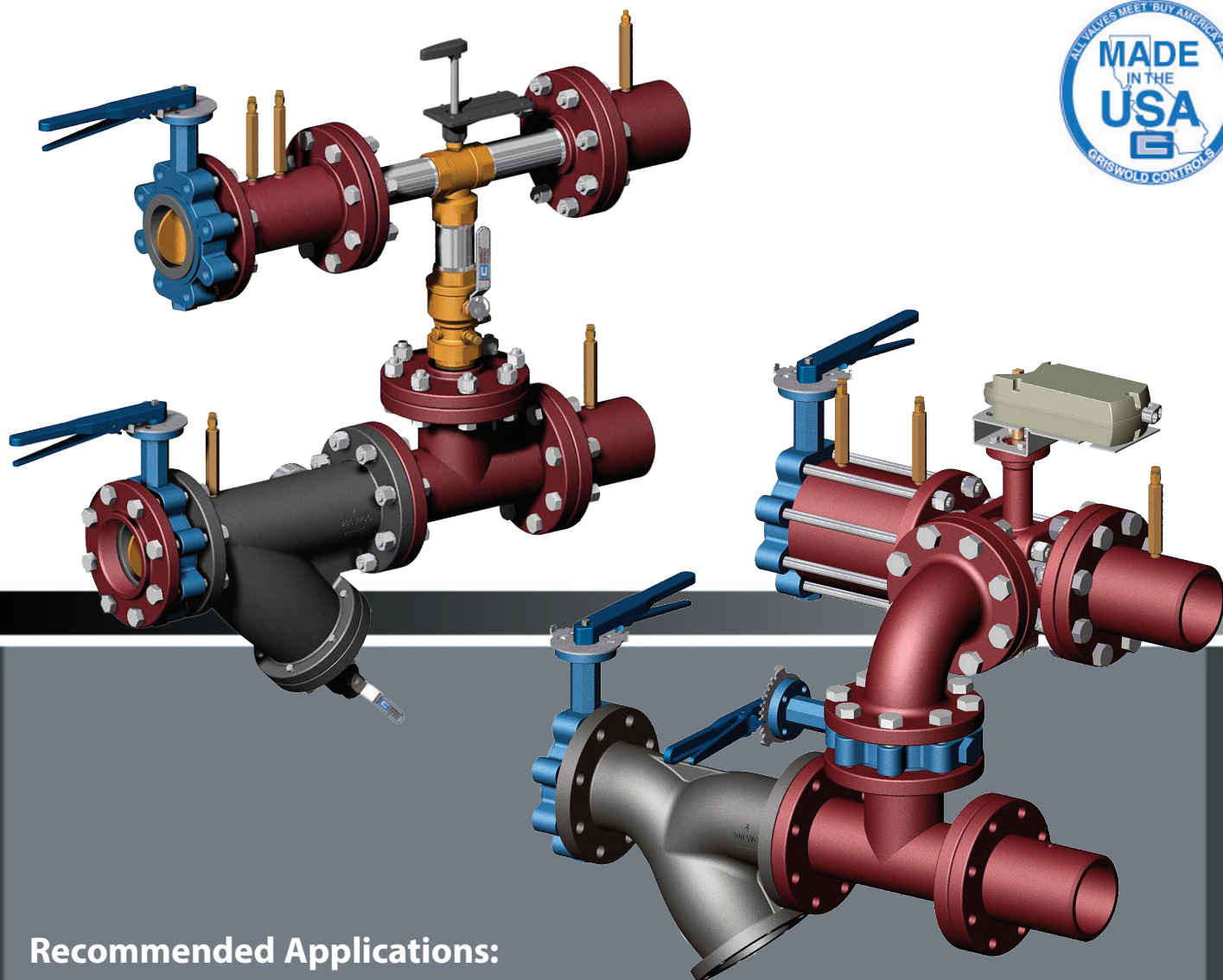


AHU Products and Accessories



Recommended Applications:

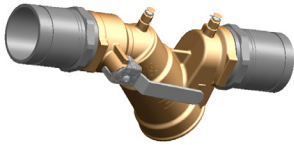
- Where hassle-free product distribution at job site is required
- Where the purchase order process needs to be simplified
- Where labor costs need to be decreased

Absolute Control. **Optimized Efficiency.**

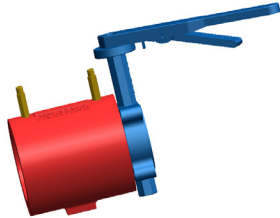
Griswold Controls offers many products suitable for installation on AHU and other large equipment. These can be mixed and matched to meet your application's specific needs.

Automatic Flow Limiting Valves

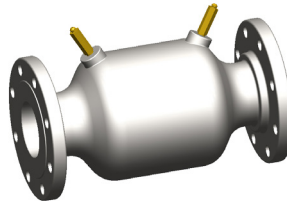
IR valve: threaded, flanged or grooved connection, 2"-3"



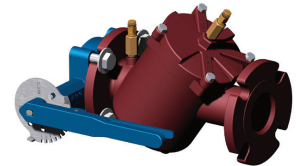
Wafer with butterfly valve: 3"-24"



GE or flanged valve: 2"-20"

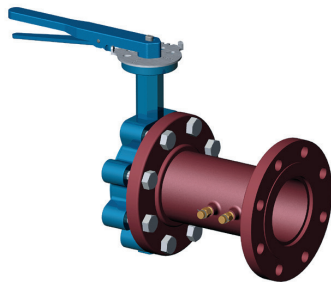


Uniflange: flanged, 2-1/2"-3"

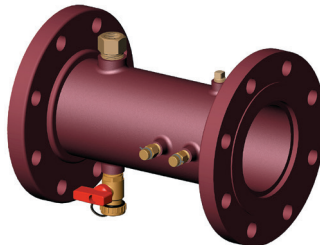


Manual Balancing Valves and Metering Stations

QuickSet® valve: flanged, grooved or weld connection, 2-1/2"-18"

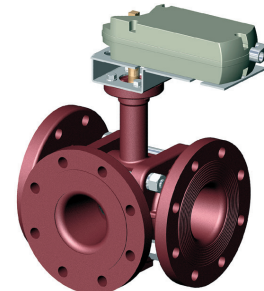


Metering station: flanged, grooved or weld connection, 2-1/2"-18"



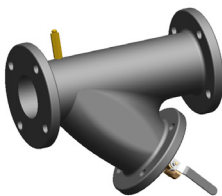
Actuated Ball Valves

Unimizer: 2-way or 3-way, threaded or flanged, 1/2"-6"

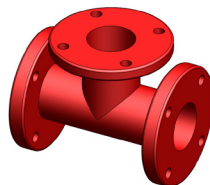


Accessories

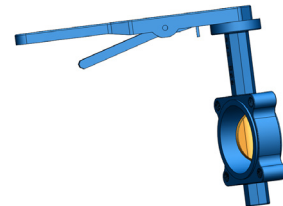
Y-strainer: flanged, 2-1/2"-8"



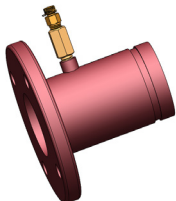
Tee: flanged, 2-1/2"-8"



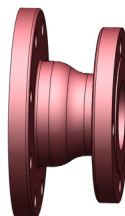
Butterfly valve: flanged, 2-1/2"-8"



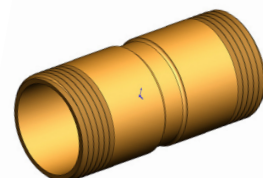
Adapter with ports: flanged, grooved or weld, 2-1/2"-8"



Reducers: flanged, 2-1/2"-8"



Dielectric nipple: threaded, 1-1/4"-2"



1700 Barranca Parkway • Irvine CA 92606 | Phone 800 838 0858 • Fax 800 543 8662
E-mail info@griswoldcontrols.com | www.griswoldcontrols.com



09/23
F-5544A