

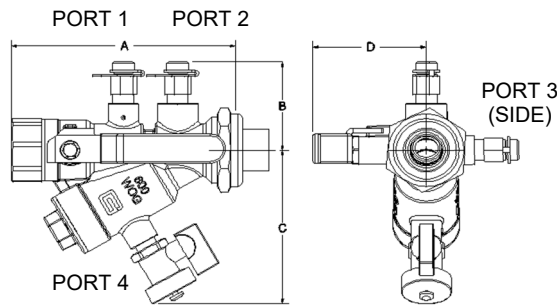
ACCESSIBLE CARTRIDGE



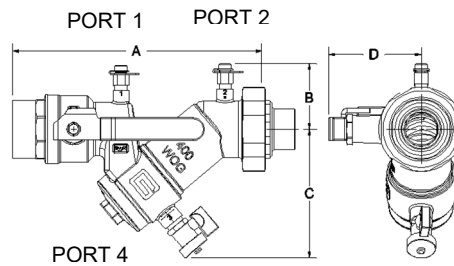
SPECIFICATIONS

- PSI/Temperature Rating:** 1/2"-1-1/2": 600 WOG 400 PSI / 250° F
1-1/2"L-2": 400 WOG 275 PSI / 250° F
- Cartridge:** AISI Type 304 stainless steel
AISI Type 17-7 PH stainless steel spring
- Strainer:** 20 mesh stainless steel
- Body Material:** 1/2"-1-1/2": Forged brass ASTM B283-06
1-1/2"L-2": Cast brass
- End Connections:** Brass – NPT, Sweat or QuickPress¹
- Ball Valve Seals:** Teflon
- Union Seal:** EPDM O-Ring
- Body Tappings²:** Port 1 and 2: Combination P/T Test Valve and Manual Air Vent (CPTA); Port 4: Drain, 1/4" in YY1, 1/2" in YY2 and YY3
- Ball Valve:** Nickel-plated brass ball
Optional: Stainless Steel ball
- Field Repairable Stem:** Dual Teflon seals and EPDM O-ring
- Options:** Port 2: Bypass³, Extension Option

1/2" – 1-1/2" Housing



1-1/2"L - 2" Housing



DIMENSIONS & WEIGHTS (NOMINAL)

All dimensions are for planning purposes only and may change without notice.

SIZE	A - FIXED END CONNECTION		UNION END CONNECTION ⁴						B	C	D ⁵	Cv ⁶	WEIGHT (LBS.)	
	FNPT	SWT	FNPT		MNPT		SWT							
1/2"	5.1	5.3	1/2", 3/4":1.0	1":N/A ⁷	1/2"-3/4":1.0	1":1.4	3/8", 3/4":1.0	1/2":0.7	1":1.3	2.2	3.8	1.2, 2.2, 2.8	8.4	2.6
3/4"	5.2	5.3		2": 2.2, 2.8										
1"	5.2	5.4	1", 1-1/4", 1-1/2":1.7		1", 1-1/4", 1-1/2":1.7 ⁸		1", 1-1/4":1.7	1-1/2":1.4	2.5	4.8	2.3, 3.0	19.1	5.2	
1"L	7.5	7.8	1-1/4":1.7	1-1/2":1.4										
1-1/4"	7.2	7.3	1-1/4":1.7	2": N/A ⁷	1", 1-1/4":1.8	1-1/2", 2":1.6	1-1/4", 2":1.6	1-1/2":1.7	2.6	5.3	2.5, 3.1	37	7.0	
1-1/2"	7.1	7.5												40
1-1/2"L	9.6	9.8	1-1/2":1.6											
2"	9.5	10.1												

For QuickPress connections add 3.1" (1/2") 3.6" (3/4"), 4.1" (1") to the FNPT length (A) listed for a valve.

NOTES

- ¹ QuickPress is available on 1/2" to 1" valves only. Connections are compatible with popular press tools and are rated for maximum 200 PSI.
- ² Body Tappings for accessories are a leak proof metal to metal seal and do not require pipe dope or tape. Tape or dope should not be used.
- ³ 1/2" Bypass is only available on 1/2" to 1" valve. 1"L to 1-1/2" valves have a bypass that is a line size tee.
- ⁴ For overall length, add union end connection length to body length.
- ⁵ Space Saver handle standard on 1/2"-3/4" valves. Standard handle on 1" to 2" valves and 1-1/2" extended handle in 1/2" to 2" is compatible with 1-1/2" insulation. Largest extended handle is compatible with 2" insulation.
- ⁶ Cv's are based on housing with a clean 20 mesh strainer but without the cartridge.
- ⁷ Tailpiece is not available for this size. Male tailpiece used with coupling.
- ⁸ 1-1/4"-1-1/2" valves can also take 1/2"-3/4" MNPT tailpieces.

MODEL NUMBER SELECTION⁹

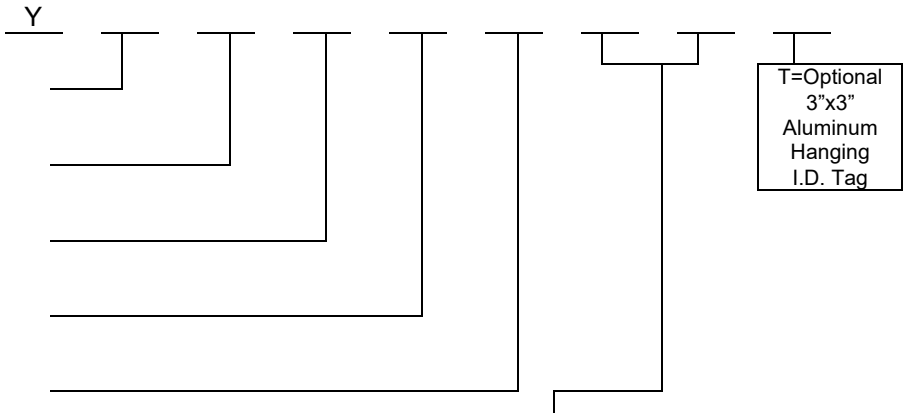
Select a Housing Size (1=1/2"-1", 2=1"L-1-1/2", 3=1-1/2"L-2")

Select a PSID control range: (1=1-14, 2=2-32, 4=4-57, 8=8-128)

Select an Accessory Package: (B=CPTA and Drain, C=CPTA, Drain and Bypass³)

Select Ball and Stem Package (P=Plated Ball, S=SS Ball and Stem)

Extension Option¹⁰ (0=No, 1=1-1/2", 2=2")



Valve	FIXED END OR UNION END ¹¹ (No Union Tailpiece=Z)			UNION END ONLY ¹¹
	Female Threaded	Female Sweat	QuickPress	Male Threaded
YY1	1/2"=E, 3/4"=F, 1"=G ¹²	3/8"=K ¹³ , 1/2"=L, 3/4"=M, 1"=N	1/2"=2, 3/4"=3, 1"=1	1/2"=H, 3/4"=I, 1"=J
YY2	1"=G, 1-1/4"=P, 1-1/2"=Q	1"=N, 1-1/4"=K, 1-1/2"=W	N/A	1/2"=H, 3/4"=I, 1"=J, 1-1/4"=S, 1-1/2"=T
YY3	1-1/4"=P ¹³ , 1-1/2"=Q, 2"=R ¹²	1-1/4"=K ¹³ , 1-1/2"=W, 2"=Y	N/A	1-1/4"=S, 1-1/2"=T, 2"=U

FLOW RATES (+/-5%)

SIZE	MODEL NO.	HEAD LOSS IN FEET ¹⁴	PSID RANGE	GPM
1/2", 3/4", 1"	YY11	3.5	1-14	.33, .50, .67, 1.00, 1.33, 1.67, 2.00, 2.33, 2.67, 3.33, 4.00, 4.67, 5.00
	YY12	7.4	2-32	.55, .75, 1.00, 1.50, 2.00, 2.50, 3.00, 3.50, 4.00, 5.00, 6.00, 7.00, 8.00
	YY14	13.4	4-57	.75, 1.00, 1.33, 2.00, 2.67, 3.33, 4.00, 4.67, 5.33, 6.67, 8.00, 9.33, 10.00
	YY18	30.0	8-128	1.10, 1.50, 2.00, 3.00, 4.00, 5.00, 6.00, 7.00, 8.00, 10.0, 12.0, 14.0, 16.0
1"L, 1-1/4", 1-1/2"	YY21	3.5	1-14	5.33, 6.00, 6.67, 7.33, 8.00, 8.67, 9.33, 10.00, 10.67, 11.33, 12.00, 12.67, 13.33, 14.00, 14.67
	YY22	7.4	2-32	8.0, 9.0, 10.0, 11.0, 12.0, 13.0, 14.0, 15.0, 16.0, 17.0, 18.0, 19.0, 20.0, 21.0, 22.0
	YY24	13.4	4-57	10.67, 12.0, 13.33, 14.67, 16.0, 17.33, 18.67, 20.00, 21.33, 22.67, 24.0, 25.33, 26.67, 28.0, 29.33
	YY28	30.0	8-128	16.0, 18.0, 20.0, 22.0, 24.0, 26.0, 28.0, 30.0, 32.0, 34.0, 36.0, 38.0, 40.0, 42.0, 44.0
1-1/2"L, 2"	YY31	3.5	1-14	12.0, 14.0, 16.0, 18.0, 20.0, 22.0, 24.0, 26.0, 28.0, 30.0, 32.0, 34.0, 36.0, 38.0
	YY32	7.4	2-32	18.0, 21.0, 24.0, 27.0, 30.0, 33.0, 36.0, 39.0, 42.0, 45.0, 48.0, 51.0, 54.0, 57.0
	YY34	13.4	4-57	24.0, 28.0, 32.0, 36.0, 40.0, 44.0, 48.0, 52.0, 56.0, 60.0, 64.0, 68.0, 72.0, 76.0
	YY38	30.0	8-128	36.0, 42.0, 48.0, 54.0, 60.0, 66.0, 72.0, 78.0, 84.0, 90.0, 96.0, 102, 108, 114

NOTES

- ⁹ Model no. and flow rate are indicated on label affixed to body.
- ¹⁰ Extension Option includes handle cover and accessory extensions.
- ¹¹ Select the Fixed End First and the Union End Second.
- ¹² Tailpiece is not available for this size. Male tailpiece used with coupling.
- ¹³ Fixed end not available for this size. Union tailpiece only.
- ¹⁴ Head Loss in Feet is provided for pump head calculations. (1 PSI = 2.307 Feet of Water)