



SPECIFICATIONS

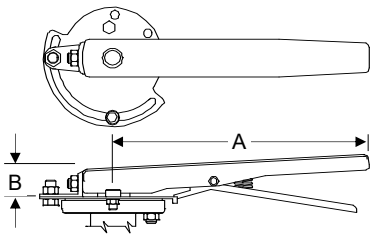
PSI/Temp Rating:	2-1/2" - 12": 200PSI/275°F 14" - 20": 150PSI/275°F
Body:	Ductile Iron
Disc:	Aluminum Bronze
Shaft:	316/416 Stainless Steel
Bushing:	PTFE
Seat:	EPDM Standard
Key:	Carbon Steel
O-Ring:	NBR
Assembly:	Valve comes fully assembled
Service:	Bi-directional or Dead End

DIMENSIONS & WEIGHTS (NOMINAL)

All dimensions are for planning purposes only and may change without notice.

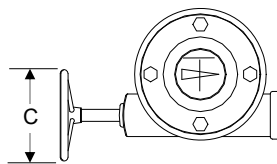
DIM	SIZE											
	2-1/2"	3"	4"	5"	6"	8"	10"	12"	14"	16"	18"	20"
A	6.9	7.1	7.9	8.4	8.9	10.3	11.5	13.3	14.5	15.8	16.6	18.9
B	5.5	6.0	7.5	8.5	9.5	11.8	14.3	17.0	18.8	21.3	22.8	25.0
C¹	1.8	1.8	2.1	2.2	2.2	2.4	2.7	3.1	3.1	4.0	4.5	5.0
D	1.3	1.3	1.3	1.3	1.3	1.8	1.8	1.8	1.8	2.0	2.0	2.5
L	5.5	6.0	7.5	8.5	9.5	11.8	14.3	17.0	18.8	21.3	22.8	25.0
M	4	4	8	8	8	8	12	12	12	16	16	20
Weight	10	16	28	30	33	72	95	128	178	255	290	494

Throttling/Infinitely Adjustable Handle

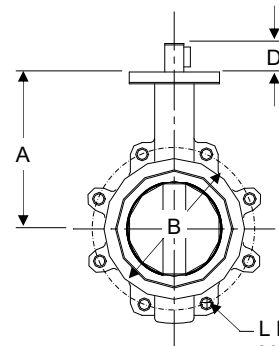
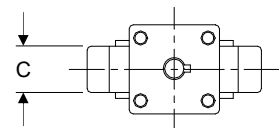


Size	Bore for Shaft	A	B
2-1/2"-3"	0.50	10.5	1.06
4"	0.63	10.5	1.06
5"-6"	0.75	10.5	1.06

Gear Operator



Size	C
8"-18"	11.8
20"	15.8



L hole diameter
M # of holes

NOTES:

¹ C dimension does not include seat.

Cv VALUES - VALVE SIZING COEFFICIENTS

SIZE	Cv
2-1/2"	196
3"	302
4"	600
5"	1022
6"	1320
8"	2165
10"	3353
12"	5827
14"	7037
16"	10416
18"	12215
20"	15959

MODEL NUMBERS

MATERIAL	CAST IRON			
HANDLE TYPE	INFINITE ADJUSTMENT W/LOCK	GEAR/ HAND WHEEL		
SIZE	2-1/2"	8278-28 / 8278-108 ²	N/A	
	3"	8278-29 / 8278-109 ²	N/A	
	4"	8278-30 / 8278-104 ²	N/A	
	5"	8278-31 / 8278-105 ²	N/A	
	6"	8278-32 / 8278-106 ²	N/A	
	8"	N/A	8278-55	
	10"	N/A	8278-07	
	12"	N/A	8278-08	
	14"	N/A	8278-09	
	16"	N/A	8278-56	
	18"	N/A	8278-57	
	20"	N/A	8278-125	

NOTES:

² 8278-104 thru 8278-109 are special order valves that meet MADE IN USA requirements. Handle is not infinite adjustable.