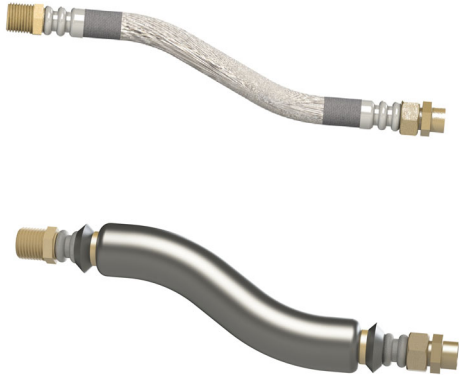


**FIRE RATED HOSE**

**SPECIFICATIONS**



**PSI / Temperature Rating:** -40°F to 260°F: 1/2" 261 PSI, 3/4": 232 PSI, 1": 203 PSI, 1-1/4": 160; 1-1/2"-2": 145 PSI;  
 -40°F to 77°F: 1/2" 500 PSI, 3/4": 450 PSI, 1": 400 PSI, 1-1/4"-2": 300 PSI;  
 Burst Pressure: 1/2": 1740 PSI, 3/4": 1600 PSI, 1", 1400 PSI, 1-1/4"- 2": 900 PSI

**Hose Material:** EPDM polymer vulcanized by peroxide, wrapped with 304 stainless steel braid. EPDM polymer is fire retardant and meets requirements of UL-94 V0 testing.

**Ferrule (Crimp) Material:** Double Crimped Stainless steel

**Bend Radius:** 1/2": 2", 3/4": 4", 1": 5", 1-1/4": 6.5", 1-1/2": 9", 2": 12"

**End Connection:** Brass

**Swivel Nut Connection:** 1/2" – 1": Cone Seat Gasketless Dry Seal  
 1-1/4"- 2": Flat Seat with EPDM Gasket Dry Seal

**ACCESSORY OPTIONS:**

**Insulation R Value:** 1/2":2.1, 3/4":2.0, 1":1.8, 1-1/4":1.7, 1-1/2":1.6, 2":1.5

**MNPT x MNPT (SWIVEL)**

Part#	1/2"	3/4"	1"	1-1/4"	1-1/2"	2"	1/2"Ins	3/4"Ins	1"Ins	1-1/4"Ins	1-1/2"Ins	2"Ins
12"	7486-22	7486-16	7486-23	-	-	-	8517-18	8517-19	8517-20	-	-	-
18"	7486-01	7486-02	7486-03	7486-04	7486-05	-	8517-01	8517-02	8517-03	8517-04	8517-05	-
24"	7486-06	7486-07	7486-08	7486-09	7486-10	7486-17	8517-06	8517-07	8517-08	8517-09	8517-10	8517-21
36"	7486-11	7486-12	7486-13	7486-14	7486-15	7486-18	8517-11	8517-12	8517-13	8517-14	8517-15	8517-22

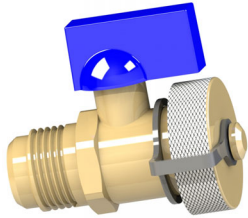
**MNPT x SWT (SWIVEL)**

Part#	1/2"	3/4"
12"	7490-22	7490-16
18"	7490-01	7490-02
24"	7490-06	7490-07
36"	7490-11	7490-12

**SWT or MNPT (SWIVEL) x Union Nut (NPSM)**

Part#	1/2" (SWT)	3/4" (SWT)	1/2" (MNPT)	3/4" (MNPT)
12"	7487-44	7487-45	7487-42	7487-43

**DRAIN VALVE "DV"**



**SPECIFICATIONS**

**PSI / Temperature Rating:** 400 WOG (300 PSI, 250°F)  
**Body and Cap Material:** Brass  
**Ball Valve:** Nickel-plated brass ball  
**End Connection:** Straight UNF<sup>1</sup>  
**Cap Connection:** 3/4" NPSH  
**Handle Rotation:** Straight is open. Rotate clockwise to close 1/4 turn.  
**Part Number:** 1/2" 9133-07, 3/4" 7342-25

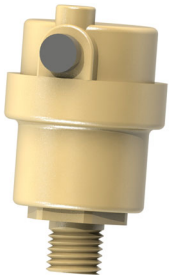
**COMBINATION PRESSURE/TEMPERATURE TEST VALVE AND AIRVENT CPTA<sup>2</sup> and PT Test Port Valves**



**SPECIFICATIONS**

**PSI / Temperature Rating:** 1000 PSI / 350°F  
**Body:** Brass  
**Cap:** Brass with plastic retainer  
**Seal:** EPDM  
**End Connection:** CPTA: 1/2" Straight UNF<sup>1</sup>, PT: 1/4" NPT  
**Part Number:** CPTA Standard: 6889-07; CPTA 2-1/2" extended version: 6889-17  
 PT Standard: 6889; PT 3" extended version: 6889-03

**AUTOMATIC AIR VENT "AAV"**



**SPECIFICATIONS**

**PSI / Temperature Rating:** 125 PSI / 210°F  
**Body:** Brass  
**End Connection:** 1/4" NPT  
**Part Number:** 738-10

**MANUAL COIN OPERATED AIR VENT "MAV"**



**SPECIFICATIONS**

**PSI / Temperature Rating:** 1000 PSI / 350°F  
**Body:** Brass  
**End Connection:** 1/2" Straight UNF<sup>1</sup>  
**Part Number:** 738-25

**NOTES**

<sup>1</sup> Body Tappings for DV, CPTA, and MAV are a leak proof metal seal and do not require pipe dope or tape. Tape or dope should not be used.  
<sup>2</sup> To vent air the CPTA must be used in the Griswold Controls valve body tapping with an integral hole. Back the CPTA out one half a turn to vent the air through the hole.