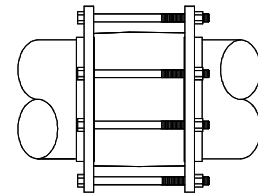
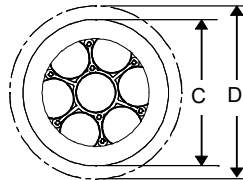
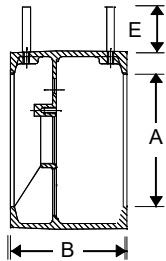




SPECIFICATIONS

PSI/Temperature Rating: 250 PSI / 350° F
Cartridge: AISI Type 304 stainless steel
 AISI Type 17-7 PH stainless steel spring
Body Material: Naval Bronze ASTM B61-922
Body Tappings: 1/4" NPT with P/T test valves
Assembly: Valve comes fully assembled. Pressure and Temperature extensions are shipped loose.
Flanges: Wafer valves are compatible with ANSI B 16.5-1968 150 lb. flanges and ANSI B 16.1-1967 125 lb cast flanges.



DIMENSIONS & WEIGHTS (NOMINAL)

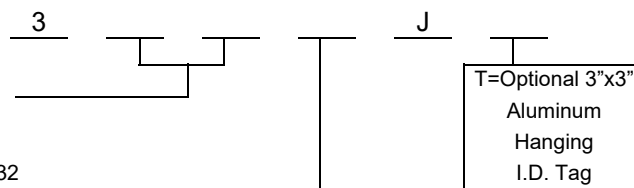
All dimensions are for planning purposes only and may change without notice.

A LINE SIZE	MODEL NO.	B (+/-0.030)	C (+/-0.060)	D REF ONLY FLG. DIA.	E	STUDS ¹ (SUPPLIED BY GRISWOLD)		WEIGHT (LBS.)
						QTY	SIZE	
3	329 J	6.75	5.38	7.50	5.50	4	5/8	17
4	332 J	7.75	6.88	9.00	5.50	8	5/8	33
6	334 J	7.25	8.62	11.00	5.50	8	3/4	42
8	337 J	7.25	10.88	13.50	5.50	8	3/4	57
10	368 J	8.00	13.44	16.00	5.50	12	7/8	93
12	369 J	8.00	16.00	19.00	5.50	12	7/8	137
14	339 J	8.00	17.63	21.00	5.50	12	1	177
16 ²	384 J	9.50	20.12	23.50	5.50	16	1	291
18	385 J	9.50	21.50	25.00	5.50	16	1-1/8	405
20	338 J	11.00	23.88	27.50	5.50	20	1-1/8	520

MODEL NUMBER SELECTION³

Select a size (3=29, 4=32, 6=34, 8=37, 10=68, 12=69, 14=39, 16=84, 18=85, 20=38)

Select a PSID control range (STD: 1=1-20 or 4-20, 2=2-32 or 8-32, 4=4-57, 8=8-128; HI-FLOW: 3=3-18, 5=5-32, 7=7.5-32)



NOTES

- ¹ Plated Steel Studs and Nuts are supplied by Griswold.
- ² 16" and larger are supplied with an eyebolt for lifting.
- ³ Model no. and flow rate are indicated on label affixed to body.

FLOW RATE TABLES PER TYPE OF CARTRIDGE (+/-5%)

TYPE OF CARTRIDGE:			STANDARD FLOW			
LINE SIZE	MODEL NO.	NOMINAL CONTROL RANGE (PSID)	1.5-20	3.2-32	5.8-57	13-128
		HEAD LOSS IN FEET ⁴	3.0	7.4	13.4	30.0
		MIN. AVAILABLE GPM	14	17.5	23.33	35
		GPM INCREMENTS	2.0	2.5	3.33	5.0
3	329	Maximum GPM	60	75	100	150
4	332	Maximum GPM	120	150	200	300
6	334	Maximum GPM	240	300	400	600
8	337	Maximum GPM	420	525	700	1,050
10	368	Maximum GPM	660	825	1,100	1,650
12	369	Maximum GPM	900	1,125	1,500	2,250
14	339	Maximum GPM	1,140	1,425	1,900	2,850
16	384	Maximum GPM	1,440	1,800	2,400	3,600
18	385	Maximum GPM	1,860	2,325	3,100	4,650
20	338	Maximum GPM	2,220	2,775	3,700	5,550

TYPE OF CARTRIDGE:			STANDARD FLOW HIGH CAPACITY	
LINE SIZE	MODEL NO.	NOMINAL CONTROL RANGE (PSID)	4-20	8-32
		HEAD LOSS IN FEET ⁴	9.2	18.4
		GPM INCREMENTS	20.0	25.0
3	329_	Minimum GPM	90	110
		Maximum GPM	130	160

TYPE OF CARTRIDGE:			HI - FLOW				
LINE SIZE	MODEL NO.	CONTROL RANGE (PSID)	3-18 (LOW INCREMENTS)	3-18 (NO INCREMENTS)	5-32 (LOW INCREMENTS)	5-32 (NO INCREMENTS)	7.5-32 (NO INCREMENTS)
		MAX. PRES. DIFF. (PSI)	18	18	32	32	32
		HEAD LOSS IN FEET	5.8	5.8	11.5	11.5	17.5
		GPM INCREMENTS	2.0	SEE ACTUAL FLOWS	2.5	SEE ACTUAL FLOWS	SEE ACTUAL FLOWS
3	329_	Minimum GPM	N/A	N/A	N/A	N/A	N/A
		Maximum GPM	N/A	N/A	N/A	N/A	N/A
4	332_	Minimum GPM	114	200	152.5	335, 360,	500, 600
		Maximum GPM	160		275	400	
6	334_	Minimum GPM	114	400	152.5	735, 760,	1000, 1200
		Maximum GPM	360		675	800	
8	337_	Minimum GPM	114	700	152.5	1335, 1360,	1800, 2100
		Maximum GPM	660		1,275	1400	
10	368_	Minimum GPM	114	1100	152.5	2135, 2160,	2400, 3000,
		Maximum GPM	1,060		2,075	2200	3300
12	369_	Minimum GPM	114	1500	152.5	2935, 2960,	3500, 3900
		Maximum GPM	1,460		2,875	3000	4500
14	339_	Minimum GPM	114	1900	152.5	3735, 3760,	4500, 5100
		Maximum GPM	1,860		3,675	3800	5700
16	384_	Minimum GPM	114	2400	152.5	4735, 4760,	5400, 6000
		Maximum GPM	2,360		4,675	4800	6600, 7200
18	385_	Minimum GPM	114	3100	152.5	6135, 6160,	6900, 7500, 8100
		Maximum GPM	3,060		6,075	6200	8700, 9300
20	338_	Minimum GPM	114	3700	152.5	7335, 7360,	8700, 9300, 9900,
		Maximum GPM	3,660		7,275	7400	10500, 11100

NOTES

⁴ Head Loss in Feet is provided for pump head calculations. (1 PSI = 2.307 Feet of Water)