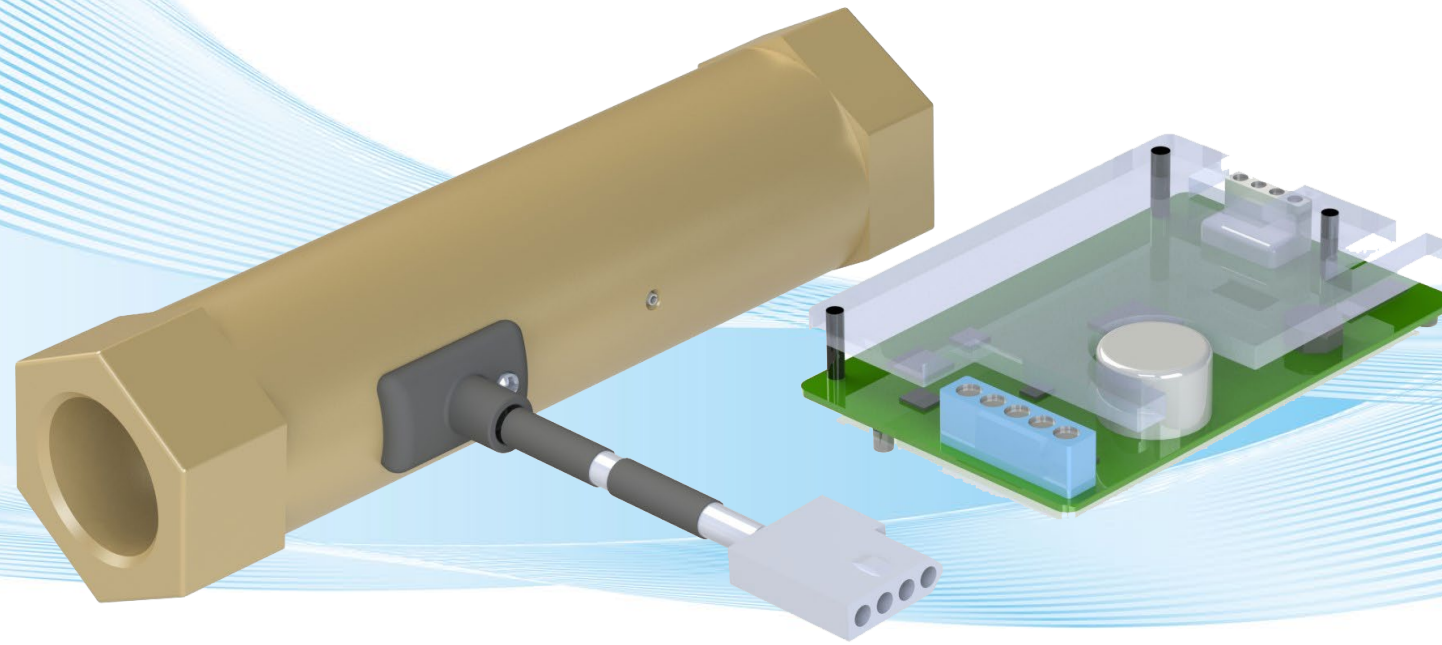




STREAMLINE



Smallest Actuated Valve in the HVAC Industry



GRISWOLD
CONTROLS

Streamline Actuated Valve Features

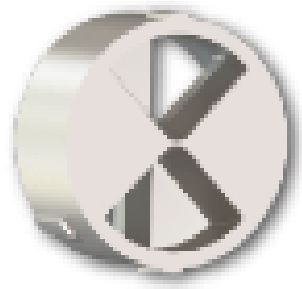
- 1 Ceramic Disc 
- 2 Actuator and Remote Electronic Control 
- 3 Flow Limiting Cartridge 
- 4 Housing 



Streamline Actuated Valve Features

1 Ceramic Disc

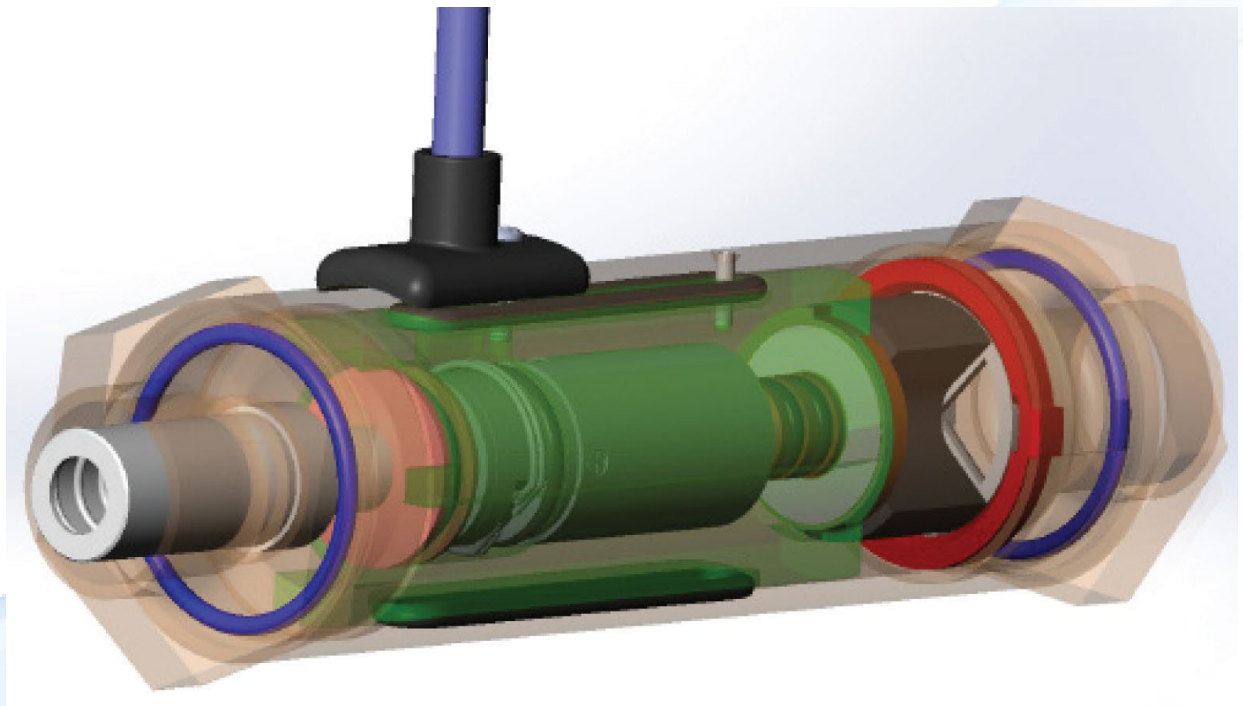
- Equal percent
- Small footprint
- Chemical resistant
- Low PSID
- Low torque
- High close off pressure
- ANSI Class IV Leak By
- Life cycle tested to 15+ years



Streamline Actuated Valve Features

2 Actuator and Remote Electronic Control

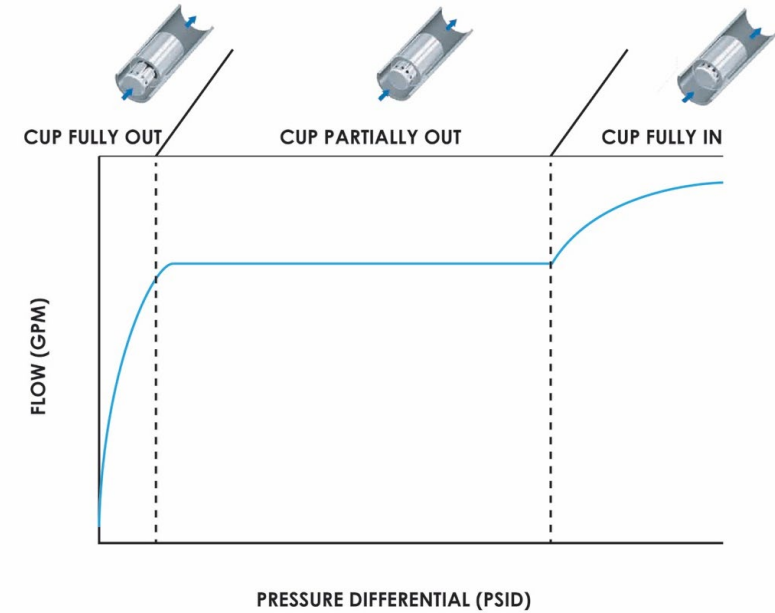
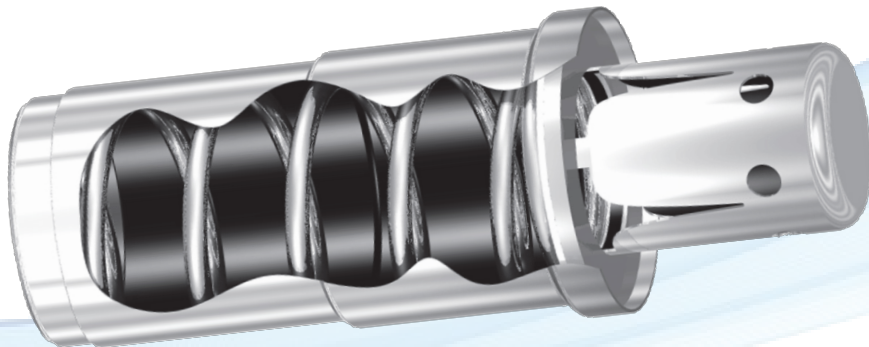
- Motor built-in
- Long life
- Multi function actuator
- Color Coded LED
- Remote Electronic Control
- Board resistant to voltage spikes



Streamline Actuated Valve Features

3 Flow Limiting Cartridge

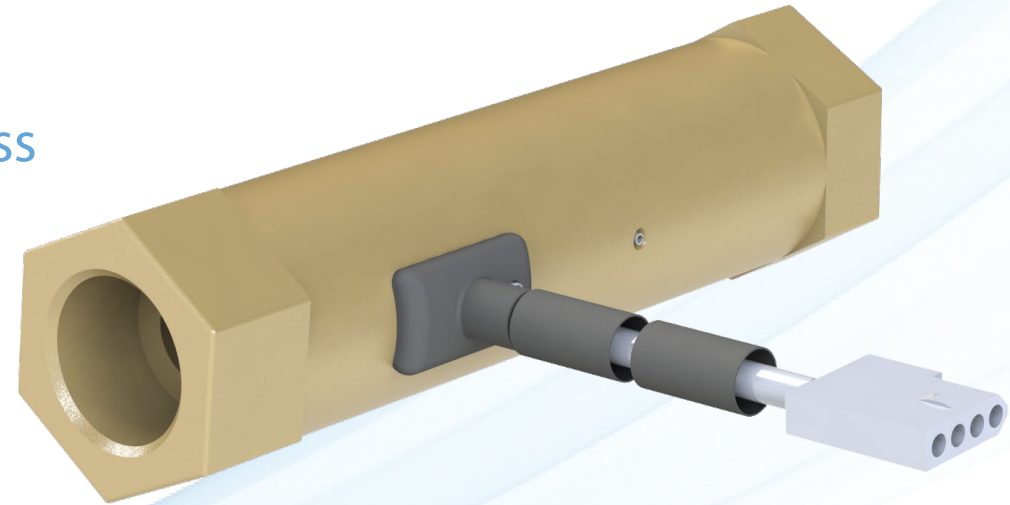
- Laser ported
- Smooth flow control as pressures change
- Stainless steel design
- Guarantees flow to be +/-5%



Streamline Actuated Valve Features

4 Housing

- Certified Lead-free brass or standard brass
- 1/2 or 3/4" FNPT or Sweat ends
- Housing is waterproof



Streamline Technical Specifications

PSI/Temperature Rating: 400 PSI / 200° F

Service: Chilled water, hot water, or water up to 50% Glycol

Flow Element: 2-Way Ceramic Disc

Cartridge: AISI Type 304 Stainless Steel
AISI Type 17-7 PH Stainless Steel Spring

Body Material: Forged Brass (Lead Free Brass Available)

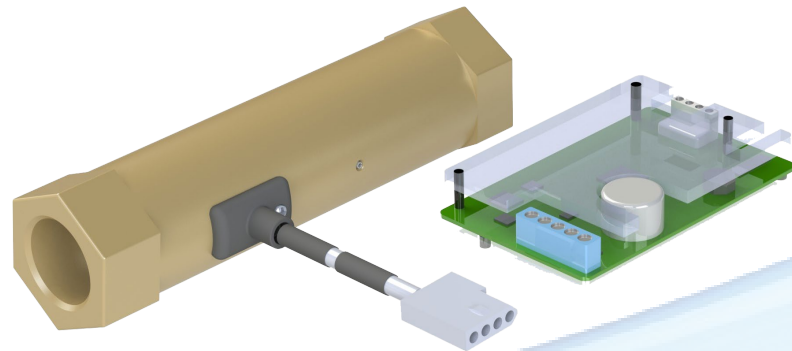
End Connections: Brass FNPT or SWT


Close Off ΔP: 250 PSI – ANSI Class 4


Cv: Electrically adjustable

Actuator Voltage: 22-35 Vac/Vdc

Actuator Cycle Time: 52 to 90 sec. (Programmable)



STREAMLINE 
Smallest Actuated Valve in the HVAC Industry

GRISWOLD CONTROLS 

Valve connector

- White
- Red
- Orange (Black)
- Yellow (Green)

Dip switch adjustment

#1	#2	
Off	Off	Cv 100%
On	On	Cv 80%
Off	On	Cv 60%
On	Off	Cv 40%
#3	Off	Failsafe close
#3	On	Failsafe open
#4	Off	DC Control
#4	On	AC Control
#5	On	Reset

	Input 2 - 10V
	DC Ground (Optional)
	AC Control
	Power 24 AC/DC
	Ground/Common



Streamline Flow & Cv Table

SIZE	STROKE	DIP SWITCH SETTINGS		FLOWRATE (GPM) @ DIFFERENTIAL PRESSURE (PSI)											
				2-Position HVAC Apps		HVAC Modulating Apps									
				DIP1	DIP2	0.5	Cv	1.5	2.0	2.5	3.0	3.5	4.0	4.5	5.0
1/2"	40%	On	Off	0.4	0.5	0.6	0.7	0.8	0.9	0.9	1.0	1.1	1.1	1.3	1.6
	60%	Off	On	1.0	1.4	1.7	2.0	2.2	2.4	2.6	2.8	3.0	3.1	3.7	4.4
	80%	On	On	1.7	2.4	2.9	3.4	3.8	4.2	4.5	4.8	5.1	5.4	6.3	7.6
	100%	Off	Off	2.5	3.5	4.3	4.9	5.5	6.1	6.5	7.0	7.4	7.8	9.3	11.1
3/4"	40%	On	Off	0.4	0.5	0.6	0.7	0.8	0.9	0.9	1.0	1.1	1.1	1.3	1.6
	60%	Off	On	1.1	1.5	1.8	2.1	2.4	2.6	2.8	3.0	3.2	3.4	4.0	4.7
	80%	On	On	1.8	2.5	3.1	3.5	4.0	4.3	4.7	5.0	5.3	5.6	6.6	7.9
	100%	Off	Off	3.5	5.0	6.1	7.1	7.9	8.7	9.4	10.0	10.6	11.2	13.2	15.8



Rigorous Testing Protocol

- Iron-oxide contaminated water over 900 ppm
- Life cycle tested to 15+ years



Already Installed!

- Aurum Golden Apartments in Golden, Colorado (website)
- Elan Pikes Peak in Colorado Springs, Colorado
- Montego Bay Resort and Casino in Wendover, Nevada



STREAMLINE

Smallest Actuated Valve in the HVAC Industry

