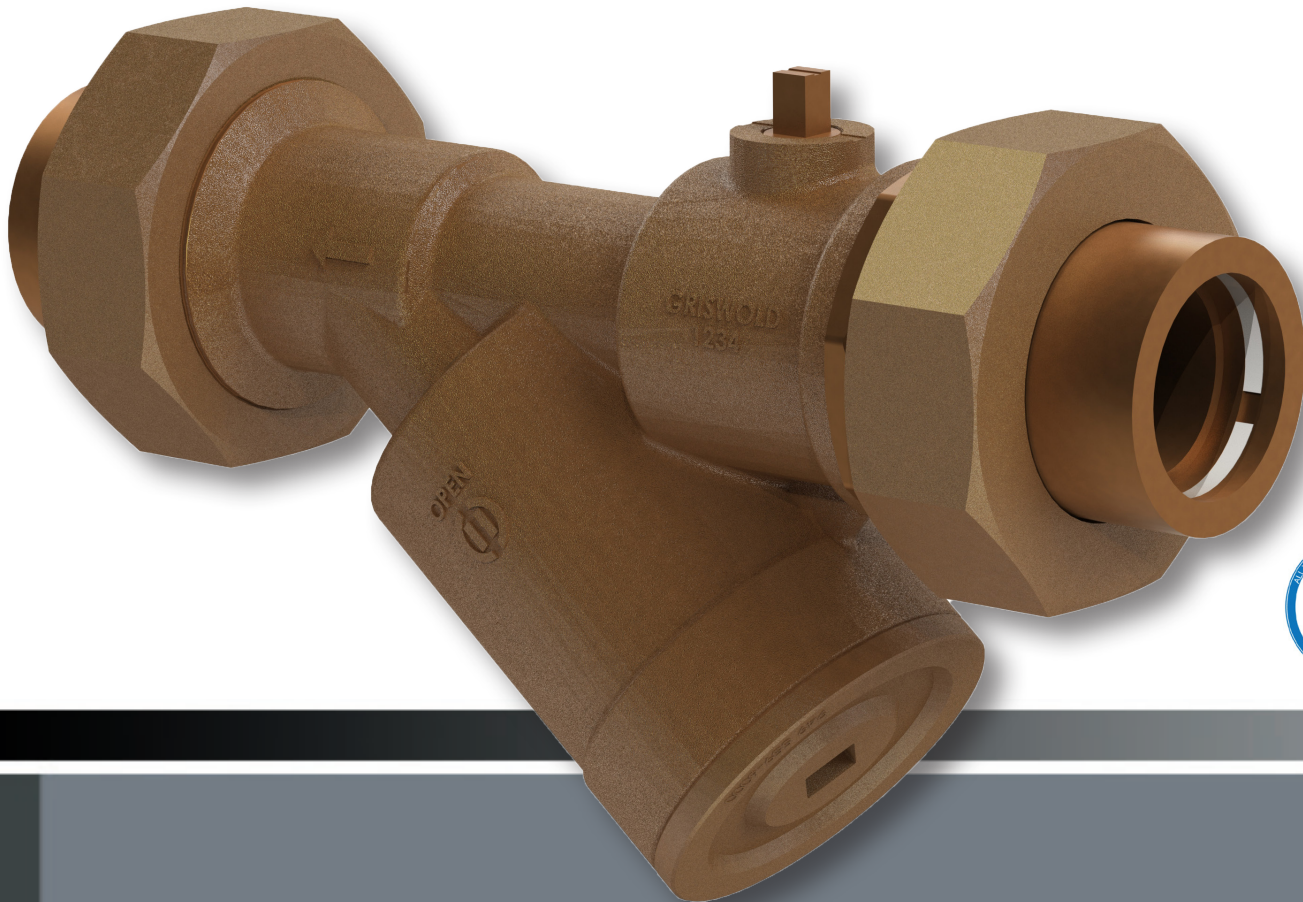


Chilled Water & Weapons Cooling System Solutions For Naval and Maritime Applications



Griswold Controls offers two types of NAVY Automatic Flow Limiting Valves

- Both meet NAVY requirements including testing to U.S. Navy MIL-S 901D and MIL-STD-167 testing
- Drop-in valve dimensions meet existing systems
- Maintains fixed flow rate within +/-5% versus industry standard of +/- 10%

Griswold Controls valves are in service on the following classes of ships:

- FFG-7 • LSD-41 • LCS-1 • T-AKE • MLP • AFSB • T-AO 205

A US Government Classified Small Business
Commercial and Government Entity (CAGE) Code 53725

Absolute Control. **Optimized Efficiency.**

Griswold Controls pioneered automatic flow control with the introduction of its stainless steel flow cartridge in 1960. For over 55 years Griswold Controls has designed and manufactured automatic flow control valves that set us apart from the competition in quality and reliability.

Two automatic flow limiting valves designed and manufactured just for Naval and Maritime applications are the NAVY "Y" Auto Balance Valve and the NAVY Inline Auto Balance Valve.



Flows from 1.1 to 114 GPM | Tested to U.S. Navy MIL-S 901D and MIL-STD-167 standards
Stainless Steel or Monel Internal Components controls flow to +/-5%

Examples of other commercial off the shelf valves include:

Automatic Flow Limiting

Our smaller valves, such as the Isolator and K Valves are available with a wide range of flows and PSID and are the perfect choice for tight spaces. These valves feature our patented field repairable stem design. They also offer easily accessible flow control cartridges combined with isolation ball valves to aid in the maintenance of coils and temperature controls, making them the perfect choice for terminal units and baseboards / in-cabinet. (A No lead version of our K valve is available for potable water to meet various government requirements.)

Flows from 0.25 to 75 GPM
Multifunction valves in brass housings
Next generation field repairable stem

Isolator R



For higher flow applications, such as those found in chillers, towers, and pumps, Griswold Controls offers the Wafer, Steel Flange, Grooved, or Weld End multi-cartridge valves.

Available in 3" to 30" sizes.

Flows up to 17,000 GPM
Cast iron, ductile iron, or steel housings (or specialty)

Wafer



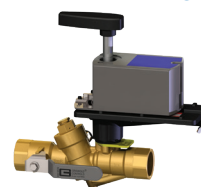
Pressure Independent Valves

Griswold Controls' PIC-V valve accurately maintains flow control regardless of pressure fluctuations, providing balancing at any point below and including the maximum flow rate. The PIC-V, featuring our patented field repairable stem design, is a multi-function valve that combines the balancing valve and the control valve into one compact package ideal for air handlers, heating and cooling coils, fan coil units, unit ventilators, and VAV re-heat coils.

Available in 1/2" to 3" sizes.

Flows from 1 to 95 GPM | Next generation field repairable stem
Terminal unit, AHU or pipeline applications | On/Off or modulating applications
Low torque/high close off pressure

PIC-V



The modulating, pressure independent dynamic flow control MVP maintains the required flow rate in a system regardless of pressure changes. Perfect for applications where temperature variance cannot be risked, such as hospitals, laboratories, or prisons, or where balancing at reduced loads is needed, such as office buildings, schools, or hotels. MVP is the perfect control valve, providing variable Cv without balancing valves.

Available in 2 1/2" to 6" sizes.

Flows from 39 to 469 GPM | Variable Cv without balancing valves
Maintains constant flow and temperature | Lightweight/compact design
For precision temperature control applications | Union or flanged ends

MVP

