

**316 STAINLESS STEEL**



**SPECIFICATIONS**

**PSI / Temperature Rating:** 125 PSIG / 400° F (See P/T Limit Chart)  
**Housing Material:** 316 Stainless Steel (150 Grit O.D./180 Grit I.D.)  
**End Connection:** Clamp Ferrules suitable for Tri-Clover connection

*Valve is 100% Stainless Steel and therefore lead free.*

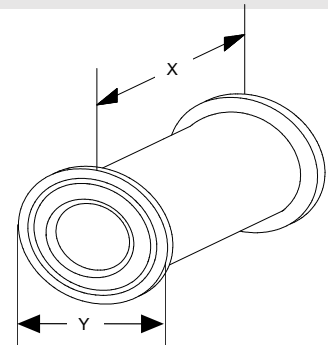
**FLOW RATES (+/-5%)**

SIZE	MODEL NO.	HEAD LOSS IN FEET <sup>1</sup>	PSID RANGE	GPM
1-1/2"	4942D	7.4	3.2-32	.55, .75, 1.00, 1.50, 2.00, 2.50, 3.00, 3.50, 4.00, 5.00, 6.00, 7.00, 8.00
	4948D	30.0	13-128	1.10, 1.50, 2.00, 3.00, 4.00, 5.00, 6.00, 7.00, 8.00, 10.0, 12.0, 14.0, 16.0
2"	4942E	7.4	3.2-32	4.5, 5.0, 6.0, 7.0, 8.0, 9.0, 10.0, 11.0, 12.0, 13.0, 14.0, 15.0, 16.0, 17.0, 18.0, 19.0, 20.0, 21.0, 22.0
	4948E	30.0	13-128	9.0, 10.0, 12.0, 14.0, 16.0, 18.0, 20.0, 22.0, 24.0, 26.0, 28.0, 30.0, 32.0, 34.0, 36.0, 38.0, 40.0, 42.0, 44.0

**DIMENSIONS & WEIGHTS (NOMINAL)**

All dimensions are for planning purposes only and may change without notice.

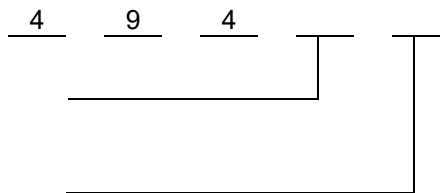
SIZE	MODEL NO.	X LENGTH	Y WIDTH	WEIGHT (LBS.)
1-1/2"	494_	2.5	2.0	2.0
2"		4.2	2.5	2.0



**MODEL NUMBER SELECTION**

Select a PSID control range  
(2=3.2-32, 8=13-128)

Insert "D" for 1-1/2", "E" for 2"



**NOTES**

<sup>1</sup> Head Loss in Feet is provided for pump head calculations. (1 PSI = 2.307 Feet of Water)

**PRESSURE & TEMPERATURE LIMITS**

This Pressure vs. Temperature chart can be used to determine if specific Griswold Constant Flow Regulator models and mountings are compatible with your application.

Please contact your local Representative or Griswold Controls for pressure and temperature requirements above and below the limits shown.

