

SPECIFICATIONS

- PSI/Temperature Rating:** 200 PSI / 250° F
- Cartridge:** AISI Type 304 stainless steel
AISI Type 17-7 PH stainless steel spring
- Body Material:** Gray-Iron ASTM A126-61T Class 30
- End Connections:** Steel flanges ANSI B16.5 Class 150 or Grooved End
- Body Tappings:** 1/4" NPT with Pressure test valves
- Assembly:** Valve comes fully assembled

DIMENSIONS & WEIGHTS (NOMINAL)

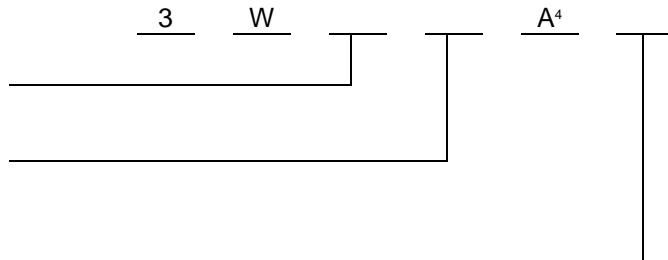
SIZE	MODEL NO.	A LENGTH	B	C	D	E	F ¹	G ²	WEIGHT (LBS.)
3"	3W_	9.58	.95	6.75	7.09	10.7	2.75	.94	50
4"		10.65	.95	7.75	7.68	10.7	3.00	.94	80
6"		12.00	2.1	7.25	9.13	12.8	3.50	1.0	136

MODEL NUMBER SELECTION³

Insert "3" for 3", "4" for 4", "6" for 6"

Select a PSID control range
(1=1-20 or 4-20, 2=2-32 or 8-32, 4=4-57, 8=8-128, High flow rates 3=3-18, 5=5-32)

Specify "W" for Weldneck Flanges, "G" for Grooved End Connection or leave blank for Threaded Flanges



NOTES

¹ Weldneck flanges and Grooved End Connections (2) add 2x dimension F to A for overall length.

² Threaded Flanges (2) add 2x dimension G to A for overall length.

³ Model no. and flow rate are indicated on label affixed to body.

⁴ Schrader pressure port for flow verification is standard on Wafer with Butterfly Valve. Replace "A" with "B" for pressure/temperature port.

Replaces form F-2367H

This specification © 2016 Griswold Controls

FLOW RATES (+/- 5%)

TYPE OF CARTRIDGE:			STANDARD FLOW			
LINE SIZE	MODEL NO.	NOMINAL CONTROL RANGE (PSID)	1-20	2-32	4-57	8-128
		MAX. PRESSURE DIFF. (PSI)	20	32	57	128
		HEAD LOSS IN FEET ⁵	3.0	7.4	13.4	30.0
		MIN. AVAILABLE GPM	14	17.5	23.33	35
		GPM INCREMENTS	2.0	2.5	3.33	5.0
3	3W_	Maximum GPM	60	75	100	150
4	3W_	Maximum GPM	120	150	200	300
6	3W_	Maximum GPM	240	300	400	600

TYPE OF CARTRIDGE:			STANDARD FLOW HIGH CAPACITY	
LINE SIZE	MODEL NO.	NOMINAL CONTROL RANGE (PSID)	4-20	8-32
		MAX. PRES. DIFF. (PSI)	20	32
		HEAD LOSS IN FEET ⁵	9.2	18.4
		GPM INCREMENTS	20.0	25.0
		3	3W_	Minimum GPM
		Maximum GPM	130	160

TYPE OF CARTRIDGE:			HI - FLOW			
LINE SIZE	MODEL NO.	NOMINAL CONTROL RANGE (PSID)	3-18 (LOW INCREMENTS)	3-18 (HIGH INCREMENTS)	5-32 (LOW INCREMENTS)	5-32 (HIGH INCREMENTS)
		MAX. PRES. DIFF. (PSI)	18	18	32	32
		HEAD LOSS IN FEET ⁵	5.8	5.8	11.5	11.5
		GPM INCREMENTS	2.0	SEE ACTUAL FLOWS	2.5	SEE ACTUAL FLOWS
		3	3W_	Minimum GPM	N/A	N/A
		Maximum GPM	N/A	N/A	N/A	
4	3W_	Minimum GPM	114	200	152.5	335, 360, 400
		Maximum GPM	160		275	
6	3W_	Minimum GPM	114	400	152.5	735, 760, 800
		Maximum GPM	360		675	

NOTES

⁵ Head Loss in Feet is provided for pump head calculations. (1 PSI = 2.307 Feet of Water)
Replaces form F-2367H

